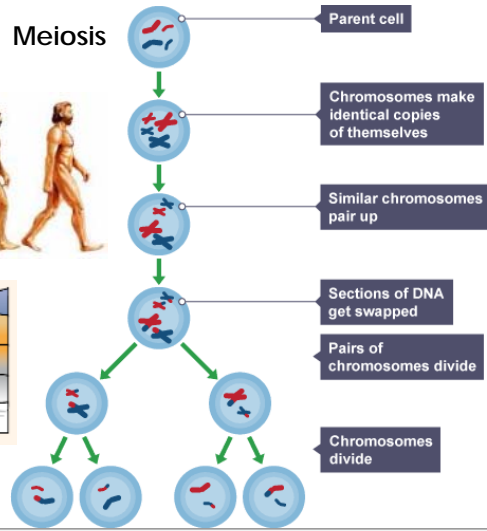
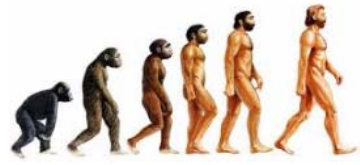
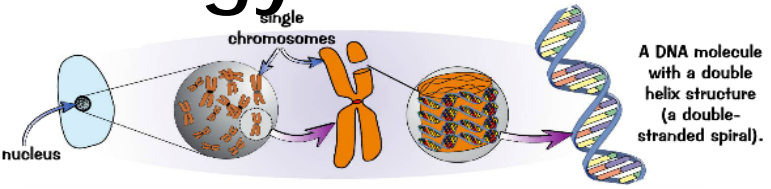
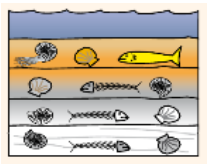
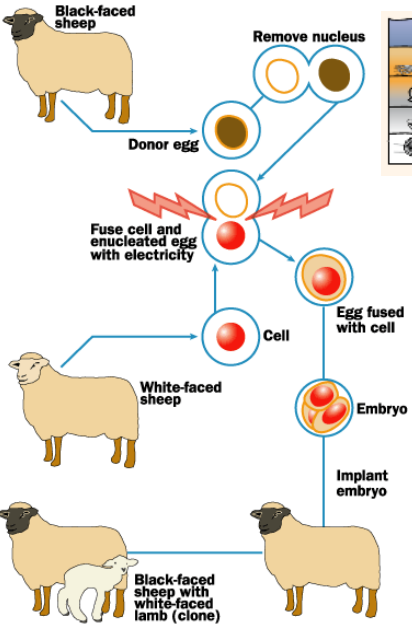
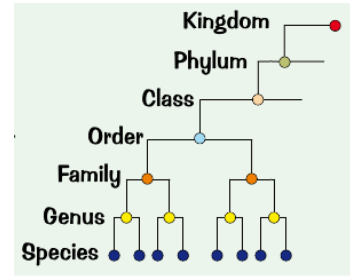


Biology Crib Sheet: Topic 6

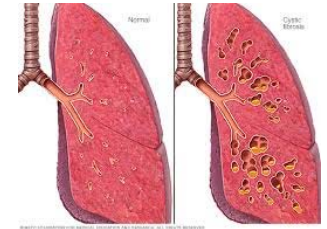


Dominant: the gene that is expressed and can be seen in the phenotype

Recessive: the gene that is only expressed if you have two copies of it (homozygous)



Cystic Fibrosis – disease caused by a recessive allele

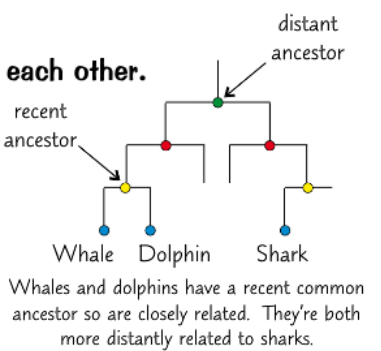


Asexual reproduction: only one parent, offspring is a clone of the parent

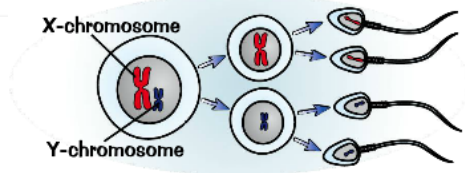
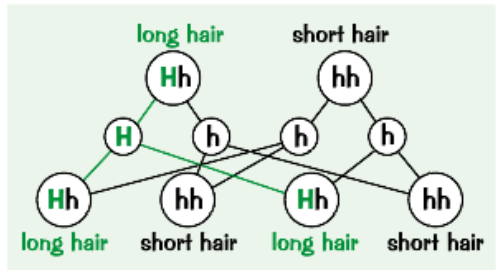
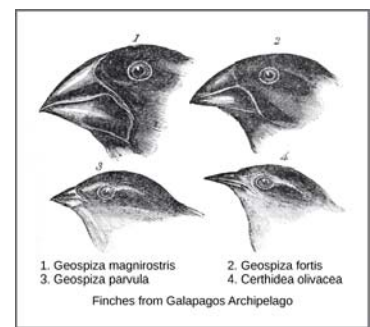
Dodos are now extinct. Humans not only hunted them, but introduced other animals which ate all their eggs, and we destroyed the forest where they lived — they really didn't stand a chance...

Phenotype: physical features of an organism

Genotype: genetic make up of an organism (its genes)



Darwin - Natural Selection



Sexual reproduction: fusion of two gametes (parents) resulting in an offspring with a mixture of genes

